

Lakes IV SPEC SUITE 235 | 2,455 RSF



PRICING INFORMATION

\$28.00 - \$29.00 per RSF NNN plus Electricity
2025 Estimates: NNNs = \$12.40
Electricity = \$1.41

DESIGNER CURATED SUITE

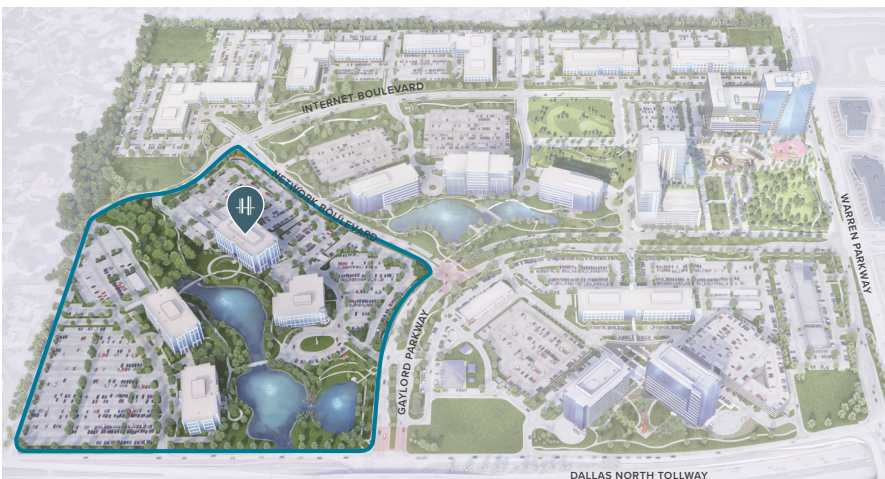
Inviting reception area, hospitality-driven break area, glass front conference room and offices featuring areas with open ceilings and upscale finishes throughout.

FLEXIBILITY

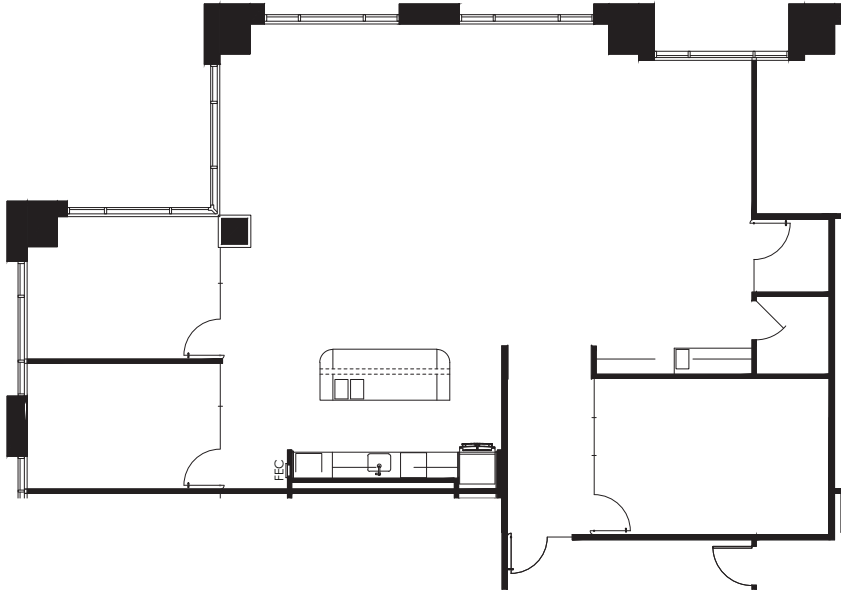
Our move-in ready spec suites provide immediate office solutions, but with 2.6M RSF of office space in HALL Park, our tenants enjoy the peace of mind to grow with ease.



THE LAKES DISTRICT



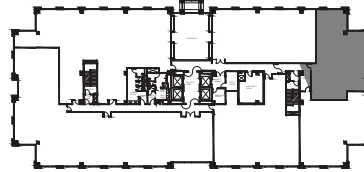
FLOOR PLAN



HIGH END FINISHES



Key Plan: 2,455 RSF



HALL PARK AMENITIES

- Greenscape and Lakes
- 200 Works of Art
- Walking Trails & Bike Share Program
- Fitness Center
- Multiple Conference Centers
- Outdoor Meeting and Work Spaces
- On-site Casual Dining

- NOW OPEN**
- Kaleidoscope Park
 - HALL Park Hotel
 - Palato Italian Kitchen + Lounge
 - The Monarch Apartments
 - Additional Retail

CONTACT US

- Kim Butler, Executive Vice President
kbutler@hallgroup.com
t 214.269.9550
- Brad Gibson, Vice President
bgibson@hallgroup.com
t 940.595.4483
- Rena Padachy, Vice President
rpadachy@hallgroup.com
t 214.934.1114



NEED FURNITURE FOR YOUR NEW SPEC SUITE?
 The HALL Select Design Center is an innovative concept that assists companies by expediting furniture decisions to create a beautifully branded and customized office in as little as eight weeks.
WWW.HALLPARK.COM/HALL-SELECT