

*Lakes II* SPEC SUITE 260 | 7,049 RSF



**PRICING INFORMATION**

\$27.00 - \$28.00 per RSF NNN plus Electricity  
2025 Estimates: NNNs = \$12.43  
Electricity = \$2.07

**DESIGNER CURATED SUITE**

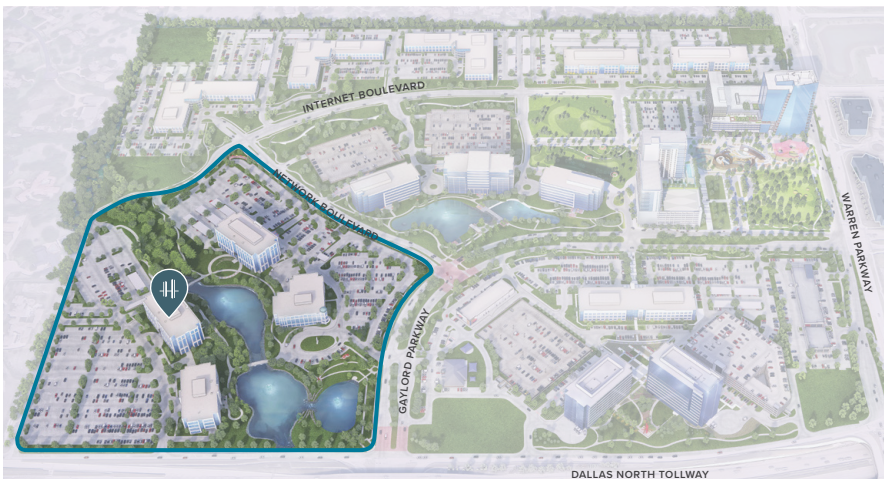
Inviting reception area, hospitality-driven break area, glass front conference room and offices featuring areas with open ceilings and upscale finishes throughout.

**FLEXIBILITY**

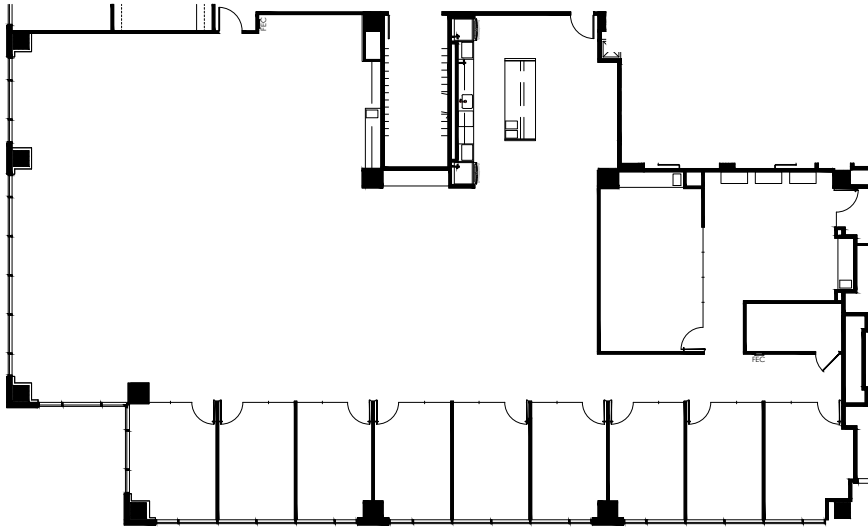
Our move-in ready spec suites provide immediate office solutions, but with 2.6M RSF of office space in HALL Park, our tenants enjoy the peace of mind to grow with ease.



**THE LAKES DISTRICT**



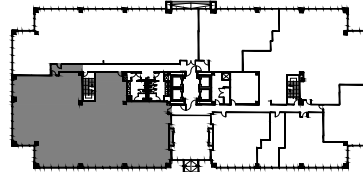
**FLOOR PLAN**



**HIGH END FINISHES**



Key Plan: 7,049 RSF



**HALL PARK AMENITIES**

- Greenscape and Lakes
- 200 Works of Art
- Walking Trails & Bike Share Program
- Fitness Center
- Multiple Conference Centers
- Outdoor Meeting and Work Spaces
- On-site Casual Dining

- NOW OPEN**
- Kaleidoscope Park
  - HALL Park Hotel
  - Palato Italian Kitchen + Lounge
  - The Monarch Apartments
  - Additional Retail

**CONTACT US**

- Kim Butler, Executive Vice President  
kbutler@hallgroup.com  
t 214.269.9550
- Brad Gibson, Vice President  
bgibson@hallgroup.com  
t 940.595.4483
- Rena Padachy, Vice President  
rpadachy@hallgroup.com  
t 214.934.1114



**NEED FURNITURE FOR YOUR NEW SPEC SUITE?**

The HALL Select Design Center is an innovative concept that assists companies by expediting furniture decisions to create a beautifully branded and customized office in as little as eight weeks.

[WWW.HALLPARK.COM/HALL-SELECT](http://WWW.HALLPARK.COM/HALL-SELECT)

[HALLPARK.COM](http://HALLPARK.COM)